

# **Older Adult Services Advisory Council Meeting\***

## **Area Agency on Aging IIIA**

### **March 10, 2021**

*Last meeting November 18, 2020 due to the COVID-19 pandemic*

\*This meeting is subject to the Michigan Open Meetings Act.

This meeting is being audio recorded.

Minutes from this meeting are posted for public review at [www.kalcounty.com/hcs/aaa](http://www.kalcounty.com/hcs/aaa)





# Welcome & Introductions:

## *Older Adult Services Advisory Council (OASAC)*

- Kelly Quardokus
  - *Q Elderlaw, Council Member, Chair*
- Tim Charron
  - *Council Member*
- Danna Downing
  - *Council Member/SAC*
- Kimberly Middleton
  - *Life EMS, Council Member*
- Kimberly Phillips
  - *Portage Senior Center, Council Member*
- Dawn Shilts
  - *Portage Senior Center, Council Member*

- Dr. Daniel Brauner
  - *Council Member*
- Dr. Margaret Hale-Smith
  - *Council Member*
- Amanda Willer
  - *Council Member*
- Mike Quinn
  - *Commissioner*
- Fran Brauder Melgar
  - *Alternate Commissioner*

*Thank you!!!*





# Agenda 3/10/21 OASAC Meeting

- Old Business: Approval of Nov. 2020 Meeting Minutes
- New Business: Election of Officers- Chair & Vice-Chair
- Programmatic Update:
  - AAALIA Orientation & Overview
  - COVID-19 Pandemic response
- MSAC Openings: Discussion of filling roles
- Member Time





# What is an Area Agency on Aging?

---

- **Why?** Exists to identify needs, coordinate resources, provide support, and advocate for older adults and their caregivers.
- **Nationally known, locally provided:** 629 Area Agencies on Aging. Part of a federal, state, and local Network

**Goal: Aging in Place**





# Kalamazoo County AAAIIIA

## Federal

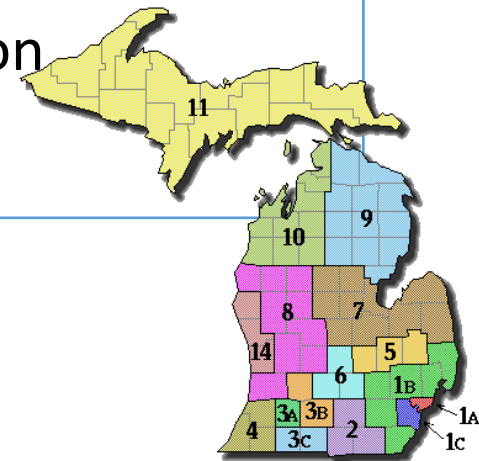
- Administration for Community Living
- Older Americans Act of 1965 (Congress)

## State

- Department of Health & Human Services
- Aging & Adult Services Administration

## Local

- Kalamazoo County Government
- Health & Community Services Department
  - Older Adult Services Division
    - Area Agency on Aging





# Information & Assistance

---

- Free, unbiased assistance in accessing resources for senior citizens and their caregivers.
- Database of aging resources specific to Kalamazoo County
- Clinical social workers answer the call: Explore needs, find resources, and facilitate referrals

[269-373-5173](tel:269-373-5173)





# Information & Assistance: Pathway

Program Entry Points				
Level of Need	HIGH			LOW
MIG Screening Score	D – Imminent Risk of Nursing Home Placement	C – Personal Care Needs	B – Homemaking	A – Information & Assistance
Waitlist Priority	1	2	3	4
Enrollment Contact Time	2 weeks	2-4 Weeks	4+ Weeks	≤ 1 Weeks**
Program Classification	Long-Term Programs			Short-Term Programs
Recommended Programs*	AASA Care Management  Targeted Care Management	Community Living Program	Care Coordination & Support  Home Assist Program  Options Counseling (Greater than 3 months)	Options Counseling (Less than 3 months)  Counseling (Caregiver, General)  Active Daily Living Website  Information & Assistance





# Community-Based Case Management

## *Short-term and long-term programs*

---

- **Person Centered**
- **Requirements:** 60+, Kalamazoo County Resident
- **No** Level of Care Determination required.
- **No** income qualifications, Medicaid **not** required
- **Multi-Disciplinary Approach:** 8 Master Level Social Workers, 2 Registered Nurses





# Short-Term Care Management Programs

---

Short-Term Programs				
Program Name	Options Counseling	Information & Assistance	Active Daily Living Website	Counseling Services
Description	Short-term Care Management services with a licensed, masters-level Social Worker for guidance on community resources and aging issues. Guidance can be in-person, virtual, or telephonic.	Telephonic guidance for Aging Resources for Kalamazoo County residents and their Caregivers. Completes intake screening for long-term programs and services.	Virtual web portal for individuals over 60 and their Caregivers. Provides educational resources on aging, aging issues, and information.	Counseling services with a Masters Level clinical Social Worker; focuses on aging, loss, dementia caregiving.  <b>Education Classes:</b> Classes for caregivers of Dementia or Alzheimer's disease.
Funding Source	State/Federal Grants	Federal/State & County Millage	County Millage	Federal/State & County Millage
Reporting Classification	AASA/Options	n/a	n/a	n/a
AASA Op. Standard	A-7	A-4	n/a	C-16, C-17





# Long-Term Care Management Programs:

## *Available In-Home Services*

<b>Homemaking</b>	Assistance in cleaning and maintaining home, including assistance in transportation, grocery shopping, and meal preparation.
<b>Personal Care</b>	Hands-on assistance. Including bathing, dressing, feeding, and toileting/incontinence assistance.
<b>Respite Services</b>	Assistance to provide respite for a caregiver. Includes services from Homemaking and Personal care.
<b>Adult Day Center</b>	Client can attend an Adult Day Care Center; could include transportation to and from facility.
<b>Medication Management</b>	Medication Nurse (RN) sets up medications for client.
<b>Medical Equipment</b>	Emergency Buttons and Medication Dispenser machines
<b>Transportation</b>	Home Health aide assists in transporting client to and from appointments, including medical appointments and grocery shopping.





## Long-Term Programs

Level of Need	HIGH			LOW
Program Name	AASA Care Management / Targeted Care Management	Community Living Program	Care Coordination & Support	Home Assist Program
Description	Care Management for individuals meeting nursing home level of care <i>or</i> at high risk for nursing home or long-term care placement.	Care Management for individuals at risk for nursing home or long-term care placement.	Care Management for individuals needing support to maintain community independence.	Care Management for coordination preventative services to maintain community independence.
Contact Schedule*	Assessment every 6 months. Care Plan update every 3 months. Monthly phone calls. Monthly In-Home Visits (TCM)	Assessment every 6 months. Care Plan update every 3 months. Monthly phone calls.	Assessment every 12 months. Care Plan update every 6 months. Monthly phone calls.	Assessment every 12 months. Care Plan update every 6-12 months. Monthly phone calls.
Available Services				
Home Delivered Meals	X	X	X	X
Homemaking	X	X	X	X
Personal Care	X	X	X	
Transportation	X	X		X
Emergency Response Buttons	X	X	X	X
Personal Care	X	X	X	
Respite (In-Home & Adult Day Center)	X	X	X	
Med Management & Dispensers	X	X		
Reporting Details				
AASA Op. Standard	A-1	A-1**	A-2	A-2**
Funding Source	State/Federal Grants	Local County Millage	State/Federal Grants	Local County Millage
Reporting Classifications	AASA/CM AASA/TCM	LCM3	Care Coordination & Support	LCM5
Fiscal Calendar	Fiscal Year (Oct – Sept)	Calendar Year (Jan – Dec)	Fiscal Year (Oct – Sept)	Calendar Year (Jan – Dec)





# Other Community Resources

---

- **Counseling:** Caregiver Counseling, Options Counseling, Short-Term Counseling Services
- **Long Term Care Ombudsman**
- **Elder Abuse Coalition:** Multi-Disciplinary Teams
- **Senior Expo:** *Virtual for 2021- More to come!*



[269-373-5173](tel:269-373-5173)



# MDHHS Aging & Adult Services Agency

- AASA Standards
- Quality Assurance and Compliance
- Annual Implementation Plan
- Community Needs Assessment





# **COVID-19 Pandemic Response**

## **Public Health Leadership**

### **Public Health Response: AAALIA Director/HCS**

- Education, Resources, Testing, Outbreak Management, Vaccination for the impact of COVID-19 on Older Adults
- Outbreak Response
- Acute Care Coordination
- Long Term Care Facility Task Force
- Incident Command Structure
  - Planning Section Chief
  - Equity Section Deputy
  - Operations Deputy





# Covid-19 Pandemic

---

- **Triple-A Food Boxes:** Free fresh food deliveries for homebound individuals 60 years old +; Partnership with Kalamazoo Loaves and Fishes
- **Long Term Care Facility Task Force:** Assist public health communicable disease team with outbreak education, containment, and resources for nursing homes, adult foster care, homes for the aged and assisted living
- **Coordination for Vaccinations:** Focus on 60+ population, outreach, education, feedback to Health Department, supplemental resources
- **Community Education and Support:** 90,000 + KN95 Masks Distributed to the Kalamazoo County.

[269-373-5173](tel:269-373-5173)

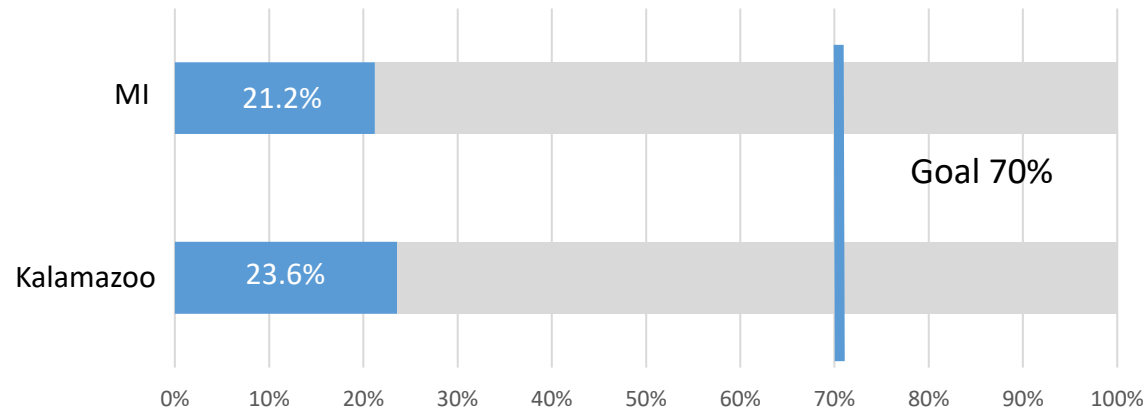




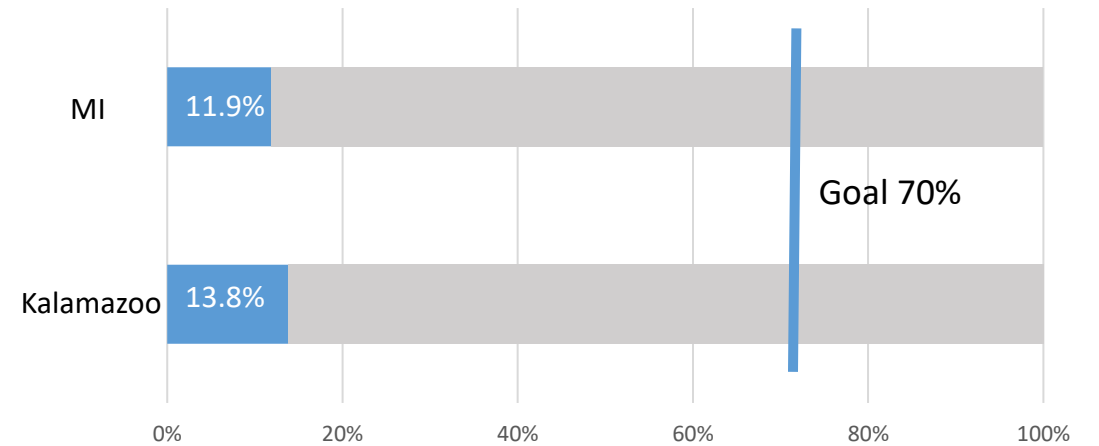
# Current Status: Kalamazoo County Residents

Total Number of Doses Given	Total First Doses Given	Total Second Doses Given
80,079	50,528	29,551

Percent of Kalamazoo County & MI Population  
(Age 16+) That Has Received at Least 1 Dose



Percent of Kalamazoo County & MI Population  
(Age 16+) That Has Completed the Series



Source: [Michigan COVID-19 Vaccine Dashboard](#); data as of 3/8/2021

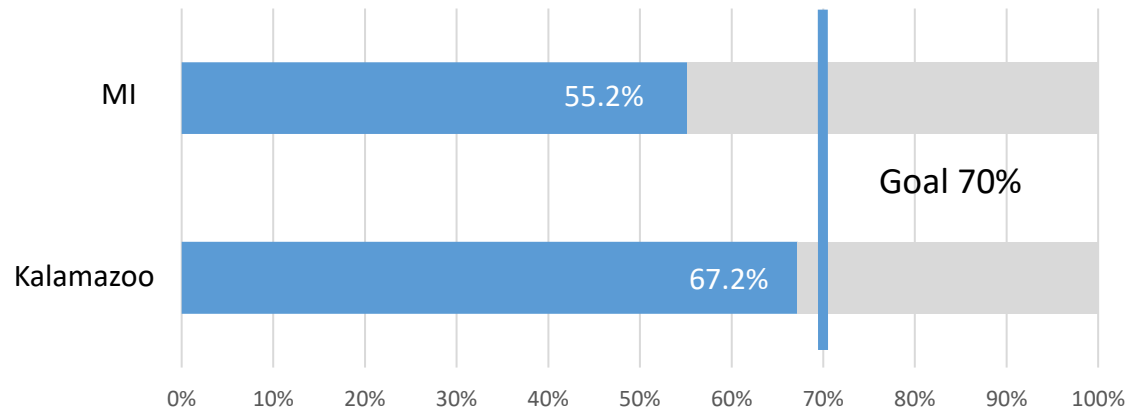




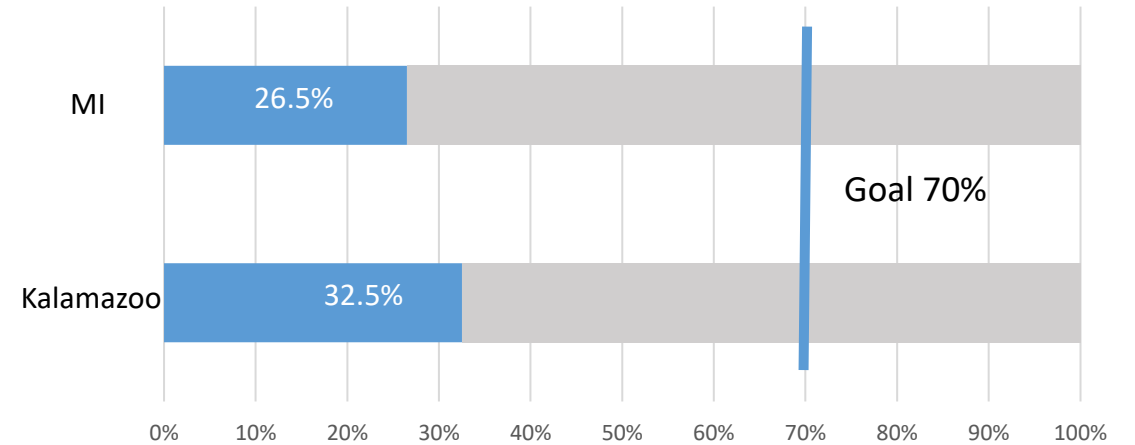
# Current Status: Kalamazoo County Residents Age 65+

Total Number of Doses Given Age 65+	Total First Doses Given Age 65+	Total Second Doses Given Age 65+
40,803	27,488	13,315

Percent of Kalamazoo County & MI Population  
(Age 65+) That Has Received at Least 1 Dose



Percent of Kalamazoo County & MI Population  
(Age 65+) That Has Completed the Series

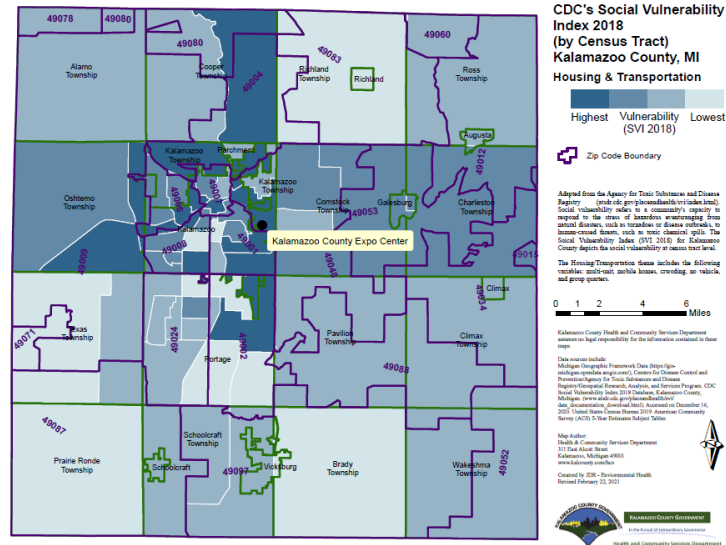


Source: [Michigan COVID-19 Vaccine Dashboard](#); data as of 03/08/2021





# Planning for equitable vaccination initiatives



## Are you 65 years or older?

You can now sign up for the COVID-19 Vaccine waiting list in Kalamazoo County!

To sign up, please Call (269) 373-5200 and press 1, or go to: <https://www.kalcounty.com/hcs/covid19vaccine.php> and complete the Waitlist Pre-registration form.

The health department is experiencing extremely high call volume. To avoid long wait times on the phone, we are encouraging people to Pre-register online.

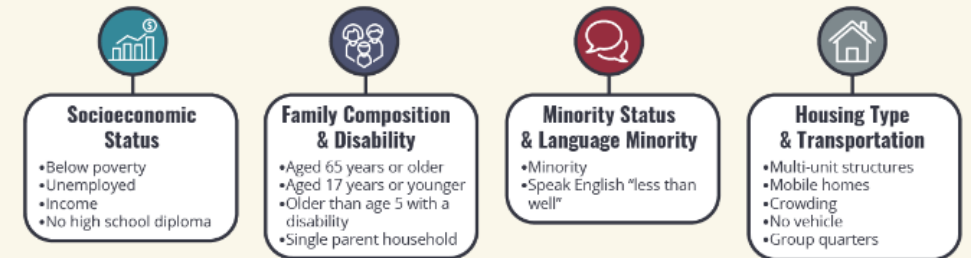
Kalamazoo County Health & Community Services is committed to providing equitable, culturally competent care to all individuals served, regardless of race, age, sex, color, national origin, religion, height, weight, marital status, political affiliation, sexual orientation, gender identity, or disability.



## SOCIAL VULNERABILITY & COVID-19

The Social Vulnerability Index (SVI) is a tool that uses census data to identify and map places where a community may have more difficulty preventing human suffering and financial loss in a disaster. This is important in responding to incidents in an equitable way.

Not all populations are equally at-risk for acquiring COVID-19 or suffering adverse outcomes from it. During the spring surge, places in Michigan that were most impacted by COVID-19, also had the highest value on the SVI. This demonstrates the need to prioritize support to the most vulnerable communities for COVID-19 testing and vaccination.



### How is social vulnerability determined?

The SVI assesses the extent that 15 known vulnerabilities (indicators) are present within a community and categorizes them into four themes: socioeconomic status, household composition and disability, minority status and language minority and housing type and transportation.

### How is the SVI used?

The SVI indicators help to prioritize distribution of scarce resources such as COVID-19 testing sites and vaccinations to ensure effectiveness and equity for all Michiganders.



Indicators like poverty and transportation can highlight places where people may have difficulty accessing COVID-19 testing, treatment and vaccination. While supplies are low, outreach efforts must be concentrated in areas with higher social vulnerabilities, where people may face more difficulty accessing vaccine.

Vaccine administrators should use the SVI to develop targeted outreach strategies while planning vaccine clinics to ensure protection of people who are the most vulnerable.



[Michigan.gov/Coronavirus](https://Michigan.gov/Coronavirus)





# Safeguarding our most vulnerable older adults:

- COVID-19 Pandemic Impact on older adults in Long Term Care:
  - Infectious Disease Precautions
  - Falls Resulting in Deaths
  - Elder Abuse, Neglect, & Exploitation Education & Prevention
- Geriatric Public Health Nurse Educator Teams
  - Housed within AAA IIIA, collaboration with
    - Public Health
    - State Licensing/Federal Regulatory Entities
    - Ombudsman Program
    - Area Agency on Aging IIIA Services





# Final Agenda Items

- Member Time
- Citizen Time
- Next Meeting: April 14, 2021 3:30pm via Zoom – Chair
  - Review Community Needs Assessment
  - Recommendations for AAALIA Program Enhancements
  - MSAC Delegate Discussion
- Adjournment





# Contact Information

---

**Intake Line/Information & Assistance**  
(269) 373-5173

**Email**  
[AAA3Ainfo@kalcounty.com](mailto:AAA3Ainfo@kalcounty.com)

**Website**  
<https://www.kalcounty.com/hcs/aaa/>

**311 E. Alcott St, Kalamazoo, MI 49001**

